

Professional Office Space

For More Information Call:

Brian Hobbs

301-937-2188



Hobbs Associates, Inc.
Commercial/Industrial Real Estate



4715 – D Sellman Road, Beltsville, MD 20705

- 1,546 +/- Sq. Ft.
- Self Contained
- Professional Office Space
- Route One Exposure/Access
- EZ Access to 495, I-95 & BW/Parkway
- Zoned – CO (Commercial Office)
- \$1,933.00 per month + utilities
- Available Immediately

The information contained herein has been given to us by the owner of the property or obtained from sources we deem reliable. No warranty or representation, express or implied, is made as to the accuracy of the information contained herein, and same is submitted subject to errors, omissions, change of price, sale or other conditions, withdrawal without notice and to any special listing conditions imposed by our principals.

Sellman Road ~ Site Plan

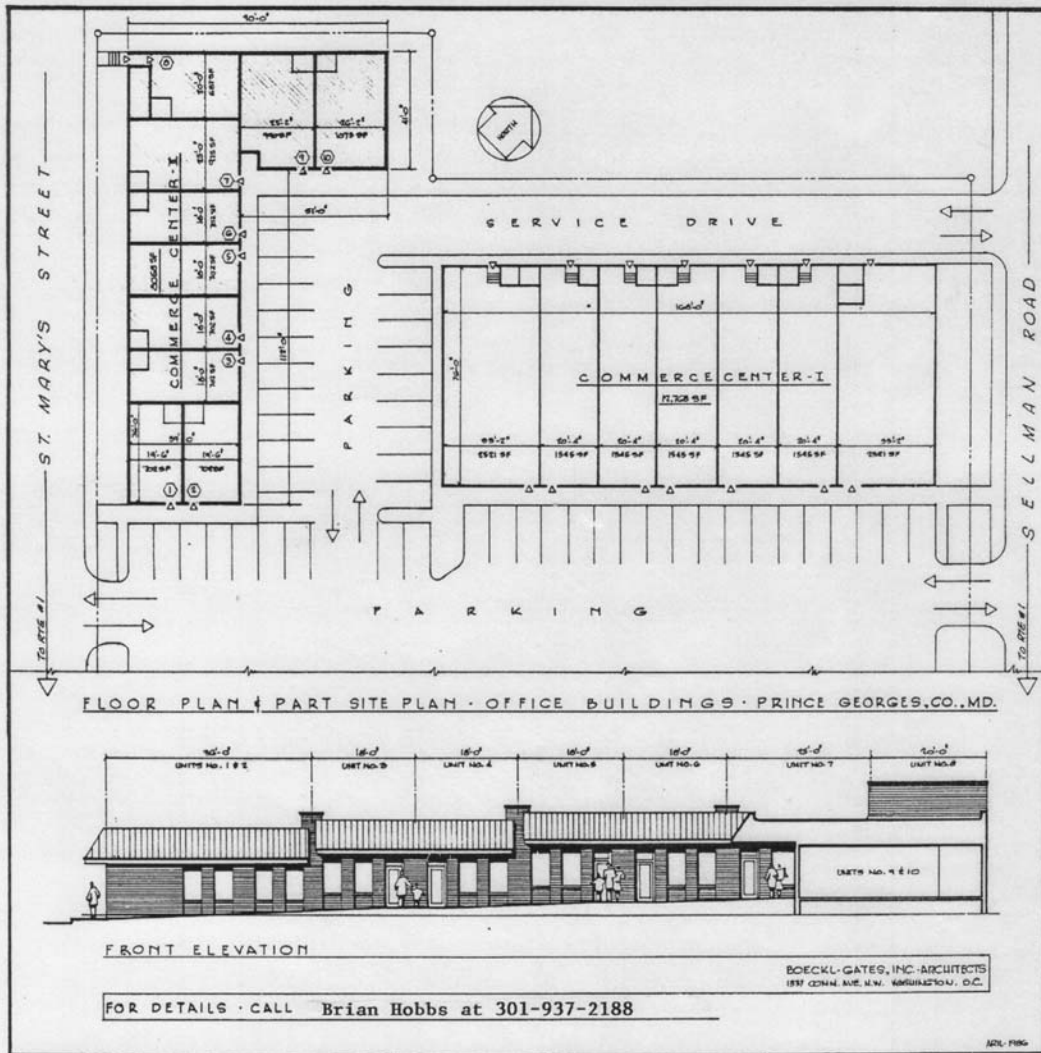
For More Information Call:

Brian Hobbs

301-937-2188



Hobbs Associates, Inc.
Commercial/Industrial Real Estate



For Additional Information please call:

Brian Hobbs

HOBBS ASSOCIATES INC.

COMMERCIAL / INDUSTRIAL REALTORS

301-937-2188

The information contained herein has been given to us by the owner of the property or obtained from sources we deem reliable. No warranty or representation, express or implied, is made as to the accuracy of the information contained herein, and same is submitted subject to errors, omissions, change of price, sale or other conditions, withdrawal without notice and to any special listing conditions imposed by our principals.